



PRICE LIST

2018

Transit Tablet Table





Nevins Freight

All prices are LIST

All prices are LIST. We reserve the right to change prices without prior notification at any time. There is a \$99 minimum order surcharge for all orders less than \$4,000 LIST and for orders \$4,000 LIST and over, a Freight Fee equaling 2.25% of the orders LIST value applies. Nevins reserves the right to add an additional surcharge for Custom or Stone Products. This surcharge will be calculated depending on the type, size and destination of the product.

Terms : Conditions : Warranty

Please refer to nevins.co

GSA and State Contract Information

Refer to Nevins website: <http://nevins.co/Resources/GSA-State-Contracts>

Contact Information

GSA Contract Administrator
B Nevins Ltd
P.O. Box 108
Cat Spring, TX 78933

Phone (800) 231-2744
Fax (713) 230-2150
quotes@nevins.co

 **GSA Advantage!**[®]
www.gsaadvantage.gov

Table of Contents

FREIGHT POLICY	1
GSA CONTRACT INFORMATION	1
TABLE BASE SPECIFICATIONS	5
TOP CONSTRUCTION	3
FINISHES	3-4
HOW TO SPECIFY	5
PRICING	5
REVISION SUMMARY	6

Materials and Finishes

Transit Tablet Table

Specifications

All specifications stated herein are subject to change without notice. Any product dimensions stated herein are nominal.

Core Material

Table Top Core

Laminate : Veneer

The standard table top core is 3/4" thick high density 45 lb. industrial grade particleboard or medium density fiber board (MDF). It meets or exceeds ANSI A208.1 and California Air Resources Board (CARB) Regulation 93120.2 Phase 1 and Phase 2 emission limits.

Core Options

NAUF Core

NAUF core material is available; please contact Nevins Customer Service Department.

Surface Materials and Finishes

High Pressure Laminate

The lamination process consists of laminate and backer sheets being adhered to core material under pressure with a water-based, formaldehyde free, low VOC adhesive. The underside of the top has a phenolic backing sheet applied. Tops include metal inserts for easy table top to table base assembly.

Laminate Selection

For laminates not included in our listing of "Standard Laminates", please contact Nevins Customer Service Department to determine any applicable upcharges. While Nevins is an open laminate line, all laminates not included in our list of standard laminates, regardless of manufacturer or finish, are subject to upcharges.

Standard Laminates

Woodgrains

Wild Cherry	Wilsonart 7054.60
Solar Oak	Wilsonart 7816.60
Beigewood	Wilsonart 7850.60
Kensington Maple	Wilsonart 10776.60
Fusion Maple	Wilsonart 7909.60

Patterns

White Nebula	Wilsonart 4621.60
Grey Nebula	Wilsonart 4622.60
Graphite Nebula	Wilsonart 4623.60
Cloud Nebula	Wilsonart 4630.60
White Tigris	Wilsonart 4783.60
Titanium EV	Wilsonart 4810.60
Silicon EV	Wilsonart 4811.60
Nickel EV	Wilsonart 4813.60
Tungsten EV	Wilsonart 4814.60
Desert Zephyr	Wilsonart 4841.60
Misted Zephyr	Wilsonart 4843.60
Loden Zephyr	Wilsonart 4844.60
Twilight Zephyr	Wilsonart 4845.60
Morro Zephyr	Wilsonart 4846.60
Cloud Zephyr	Wilsonart 4856.60
Shadow Zephyr	Wilsonart 4857.60
Spiced Zephyr	Wilsonart 4859.60

Solids

Light Beige	Wilsonart 1531.60
Antique White	Wilsonart 1572.60
Frosty White	Wilsonart 1573.60
Black	Wilsonart 1595.60
Pepperdust	Wilsonart D327.60
Designer White	Wilsonart D354.60
White Sand	Wilsonart D403.60
Khaki Brown	Wilsonart D50-60
North Sea	Wilsonart D90.60
Slate Grey	Wilsonart D91.60
Dove Grey	Wilsonart D92.60

Surface Materials and Finishes (continued)

High Pressure Laminate (continued)

Samples

Samples of all laminates are available directly from the laminate manufacturer.

Care and Maintenance for Laminates

Clean plastic laminates with mild soap and warm water. Do not use steel wool, hot water, or any abrasive cleaning product.

Veneer and Wood

Nevins veneer tops are constructed of flat cut, book matched, architectural grade maple or cherry veneer. The veneer is stained with penetrating wood dye, followed by two coats of high solids pre-catalyzed lacquer. The finish is hand sanded between coats of lacquer. Wood edge is solid maple or cherry wood. Veneers and Woods have a semi-open pore finish of a 35% sheen. Tops include metal inserts for easy table top to table base assembly.

Veneer and Wood Finishes

Finishes on Cherry	Finish Code	Laminate Equivalent *
Light Cherry	CLC	WA 7919K.78 Amber Cherry
Medium Cherry	CMC	Formica 7008.43 Acajou Mahogany
Dark Cherry	CDC	Pionite WY351H Jewel Mahogany
Light Walnut	CLW	WA 7110K-78 Montana Walnut
Dark Walnut	CDW	WA 7942.07 Cocobala
Medium Mahogany	CMM	WA 7922.07 Brighton Walnut
Finishes on Maple		
Fusion Maple	MFM	WA 7909.60 Fusion Maple
Honey Maple	MHM	Pionite WM951 Honey Maple
Custom **		
Stain to Match	STM	

* Laminate Equivalentents are not exact matches.

** Custom Finish

Nevins can match most Wood and Veneer finishes. At the time of order, please provide Nevins with (2) labeled samples that are at least 3" x 3". Samples should be labeled with the customer's order reference number and sent to Nevins Customer Service Department : 14006 Newberg Rd, Cat Spring, TX 78933. Customer's stain to match samples will not be returned. Orders requiring a stain to match may extend the standard lead-time.

Samples

Samples of Nevins veneer/wood finishes are available directly from Nevins; Refer to <http://www.nevins.co/>

Care and Maintenance for Veneer and Wood

Treat with care, as you would with any fine furniture. Coasters should be used under glasses. We recommend damp dusting and occasional cleaning with a soft cloth and a high grade furniture polish that does not contain silicone.

Surface Materials and Finishes (continued)

Solid Surface

Matte finish is standard. Solid Surface tops include metal inserts for easy table top to table base assembly.

Solid Surface Finishes

Dupont™ Corian®	Finish Code
Glacier White	S01
Savannah	S02
Silt	S03
Sahara	S05
Platinum	S07
Maui	S08

Dupont™ Corian® Terra Collection

DuPont™ has a collection of 27 Corian® colors that are Greengaurd® certified and made with pre-consumer recycled content. Please contact Nevins Customer Service Department.

Custom Solid Surface Materials

Nevins has access to many brands of solid surface materials. Please contact Nevins Customer Service Department with your preferred material.

Samples

Samples of Nevins standard DuPont™ Corian® solid surface colors are available directly from Nevins; refer to <http://www.nevins.co/>. For samples of non-standard Corian® solid surface colors, please refer to <http://www.dupont.com/products-and-services/construction-materials/surface-design-materials/brands/corinan-solid-surfaces/products/corinan-all-colors.html>

Edge Finishes

PVC Edge 3mm

PVC Finishes	Finish Code	Laminate Equivalent *
Frosty White	PVC01	WA 1573.60 Frosty White
Light Beige	PVC02	WA 1531.60 Light Beige
Khaki Brown	PVC03	WA D50.60 Khaki Brown
Pepperdust	PVC04	WA D327.60 Pepperdust
Dove Grey	PVC05	WA D92.60 Dove Grey
Folkstone	PVC06	Pionite SG241.N Folkstone
Graphite	PVC07	WA D91.60 Slate Grey
Brownstone	PVC08	NA
Black	PVC09	WA 1595.60 Black
Fusion Maple	PVC10	WA 10776.60 Kensington Maple
Wild Cherry	PVC11	WA 7054.60 Wild Cherry
Figured Mahogany	PVC12	WA 7040A.60 Figured Mahogany

* Laminate Equivalents are not exact matches.

Samples

Samples of Nevins PVC finishes are available directly from Nevins; Refer to <http://www.nevins.co/>

Base Finishes

Metal Table Bases

Powder Coat Finishes	Finish Code
Furniture White	BC01
Satin Chrome	BC03
Black	BC08
Black Wrinkle	BC18
Polished Chrome Finish	PC9

Care and Maintenance for Powder Coat Table Bases

Clean with a mild soap solution and rinse with clean, clear water. Wipe the entire surface and follow with a clean, dry cloth to buff dry.

Care and Maintenance for Chrome Table Bases

Clean with a wet cloth or window cleaner. For scuff marks or heavy soiling, a non-abrasive automotive chrome polish can be applied as directed.

Transit

Tablet Table



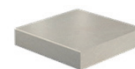
Laminate	Veneer	Solid Surface
----------	--------	---------------



**LP65
PVC**
3mm x 3/4"



**VW67
Micro**
1/8" x 3/4"



**SS45
Square Eased**
1/2"

25 1/4" OAH	25" OAH
-------------	---------

Top Shape	Top Size	Base Size	Model	List \$
-----------	----------	-----------	-------	---------

Round



20" Dia 14" Dia. RN0020ATR1C29240 / (Edge Code)

910	1020	1320
-----	------	------

Soft Rectangle



14" X 20" 10 1/2" x 15 1/2" SR1420ATR1C29241 / (Edge Code)

910	1020	1320
-----	------	------

Base Specifications

Base Height	24 1/2"
Material of Construction	
Base	Steel 3/16" thick
Column	Solid Steel 1 1/2" dia.
Glides	Plastic
Shipped	KD
Standard Finishes (powder coat)	BC01 Furniture White BC03 Satin Chrome BC08 Black BC18 Black Wrinkle
Optional Finish	PC9 Polished Chrome

Top Options

Stain to Match	STM	368 per stain
-----------------------	------------	----------------------

Base Options

Polished Chrome	PC9	200 per table
------------------------	------------	----------------------

How to Specify

- 1) Specify Table Model Number
- 2) Specify Table Top Edge Code
- 3) Specify Table Finishes
 - a) Surface Material Finish
 - b) PVC Edge Finish (laminated tops only)
 - c) Base Finish

Date	Page(s)	Modification	Description
------	---------	--------------	-------------



nevins™

P.O. Box 108
Cat Spring, Texas
78933, USA

www.nevins.co

P: 800.231.2744

E: customerservice@nevins.co

F: 713.230.2150



Earth Friendly
Printed in USA 2018



Contract Holder
Contract GS-28F-0039P