



Nevins Adjustable Height Treadmill Station

Houston, TX - June 15, 2015

Movement is a necessity of life, with that in mind Nevins introduces an adjustable height treadmill station. The desk lets you easily and conveniently adjust the desktop height with its electric adjustment feature and includes memory support for two user settings. Use as a standing desk or allow multiple user to use the active treadmill station. The treadmill station can be placed in an enclosed environment for private use or in open areas for collaborative use. Step on Nevins treadmill station is the perfect step towards a more active workspace. Designed to operate at a slow walking speed for hours of continuous use and numerous safety features, you can walk your way one step at a time to a healthier lifestyle.

Nevins Treadmill Station:

6 hours of daily use -Adjustable Height table

Intell-step: step counting feature

Intelli-guard- belt stops after 20 seconds of non use

Personal settings- w/ bluetooth tracking to online profile

Max Size Options:

Single Column: 30" D x 42" L*

Double Column: 30"D x 72" L*

*Top selection varies

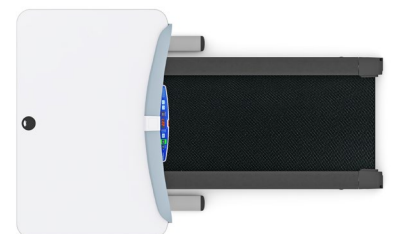
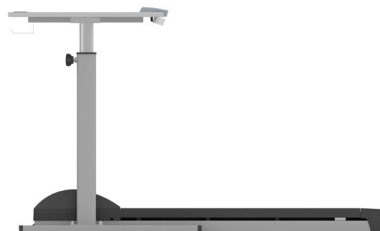
Table top:

Width: 46.75" Depth: 36.5"

Treadmill:

Length 70.5" Width 29"

Height Range: 40.25"-53"



Media Contact:

Catherine Nevins-Grell

Marketing Specialist

Catherine@nevins.co

P: 800-231-2744, ext.2133